

Rockefeller University

Digital Commons @ RU

Historical Documents, Letters, Publications

Library History

1-1972

Memorandum Regarding Letter from Dr. Zierlen, 1973

Markus Library

Follow this and additional works at: <https://digitalcommons.rockefeller.edu/historical-documents-letters-publications>

THE ROCKEFELLER UNIVERSITY

New York, N. Y. 10021



LIBRARY.

MEMORANDUM

January 25, 1973.

To : Dr. C. E. Sunderlin
From: C. R. LeSueur
Re : Letter from Dr. K. L. Zierler,
Institute for Muscle Disease, Inc. (Attached)

Since Dr. Zierler wrote regarding the granting of library privileges at the Rockefeller University and Cornell Medical College, unilateral actions by Cornell have changed the picture somewhat.

Cornell has started a "test run" to continue through June 30, 1973, during which Cornell Library cards will be issued to the professional staff of the Institute for Muscle Disease (36, according to Mr. Meyerhoff) at the discretion of the Institute Librarian, in return for a use-fee of \$2000 per Fiscal year paid by the Institute to Cornell. These Library cards will entitle the bearer to full library privileges at Cornell, including borrowing, and, through established reciprocity, to on-site use of the Rockefeller University Library. Borrowing privileges at our Library are not included in this reciprocity, except through formal Interlibrary Loan procedures.

Thus, the question of on-site use of our Library by Institute personnel would seem to have been settled by the back door method. The questions of borrowing privileges and a use-fee remain to be settled.

As regards these two questions, I do not feel that operational problems which might arise within the Library from the manner in which it is used by personnel from the Institute, or from any other "outside" organisation, should be any part of the University's decision regarding authorisation of such use. These problems are internal matters which we should be expected to handle competently in meeting whatever demands the University places upon its Library.

The questions of borrowing privileges and the possible assessment of a use-fee are, of course, parts of the study which will be reported on by Mr. Meyerhoff and myself as directed on March 15. At present it would seem that at least a "non-borrowing" form of cooperation between our Library and neighbouring institutions is being achieved through our informal agreements with Cornell, as the right to use of the Cornell Library card has been extended to the Institute for Muscle Disease, New York Hospital, NYH-Cornell School of Nursing, Manhattan Eye, Ear and Throat, New York Blood Center, Hospital for Special Surgery, Sloan-Kettering, and the American Health Foundation, under varying arrangements.

THE ROCKEFELLER UNIVERSITY

NEW YORK, N.Y. 10021

OFFICE OF THE PRESIDENT

October 11, 1972

Dr. C.E. Sunderlin
The Rockefeller University

Dear Gene:

Please note the accompanying letter from Kenneth Zierler, along with the note concerning Sonia Mirsky's experience. If feasible, it might be good if you and Robin Le Sueur discussed this matter to see how far we should go.

Sincerely,



Frederick Seitz

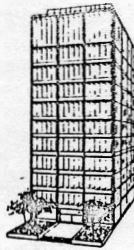
Enc.

Central Files:

1) I.M. Disease

2) Library 1972 file

INSTITUTE FOR MUSCLE DISEASE, INC.



515 EAST 71st STREET, NEW YORK, N.Y. 10021



Built and Supported by Muscular Dystrophy Associations of America, Inc., Jerry Lewis, National Chairman

YUkon 8-6800

October 5, 1972

Dr. Frederick Seitz
President
The Rockefeller University
New York, New York 10021

Dear Fred:

I've been reviewing some of the problems in connection with our own library at the Institute which is threatening to require all our space for its storage. We could reduce our space needs considerably if the 33 members of our professional staff were permitted library privileges at Cornell Medical Center and at the Rockefeller University. There are other reasons of course why this would be a handsome and helpful step toward integrating us in the community. We'd appreciate it very much if you could start us on the road toward getting these privileges and of course we would expect to bear our fair share of the financial burden.

With best wishes,

Cordially,

Kenneth L. Zierler, M.D.
Director

THE ROCKEFELLER UNIVERSITY

Dr. S -

Sonia has intimated on various occasions that she was having a certain amount of trouble with members of this establishment that were granted Library privileges. However, the problems were not serious enough that she wanted me to pass on her comments.

ts 10/10/72