

9-28-1990

NEWS AND NOTES 1990, SEPTEMBER 28

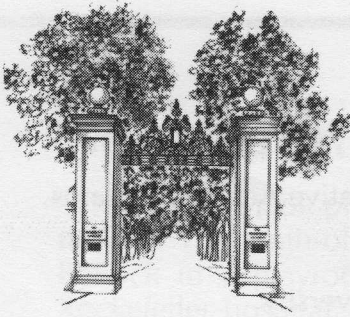
The Rockefeller University

Follow this and additional works at: http://digitalcommons.rockefeller.edu/news_and_notes_1990

Recommended Citation

The Rockefeller University, "NEWS AND NOTES 1990, SEPTEMBER 28" (1990). *News and Notes 1990*. Book 6.
http://digitalcommons.rockefeller.edu/news_and_notes_1990/6

This Book is brought to you for free and open access by the The Rockefeller University News and Notes at Digital Commons @ RU. It has been accepted for inclusion in News and Notes 1990 by an authorized administrator of Digital Commons @ RU. For more information, please contact mcsweej@mail.rockefeller.edu.



News & Notes

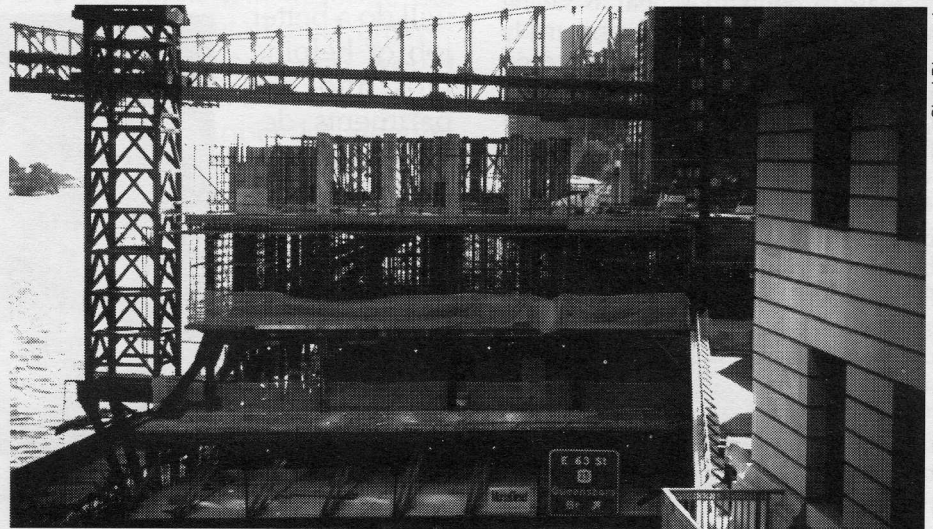
Ginny's goal: to be as good as her 'customers'

Ginny Huffman has always had some of the qualities of a meteor. When she bombs down the ski slopes, which she does as often as she can, she deliberately seeks out those difficult black diamond-marked trails. And when she was a teacher in the New York City public schools, she also chose the most difficult path, teaching dyslexic and perceptually-impaired children.

In the five years she's worked in Personnel here, her star has risen rapidly—all the way to the top. Last week Virginia Huffman was named Director of Personnel and set herself another tough goal: "We want the work of this office to be as good as the work of those we serve—in other words, we want to be the best. We want to be as responsive to the needs of our community as we can possibly be. We have fine people working here, people who are doing a good job. I see it as my central task to help them do even better."

Huffman has the task of implementing the new administration's personnel reforms. Among the most important of these:

- Further enhancement of



Construction of the university's new lab building continues above FDR Drive, and the steel work that spans the roadway is essentially complete. The structure should be enclosed by the end of the 1991 and completed by mid-1992.

Remembering Graeme Henderson, 'a generous and creative man'

A memorial service was held on Wednesday for Dr. Graeme Bell Henderson who passed away Monday in New York Hospital. The 34-year-old scientist died as a result of injuries sustained when he was struck by a hit-and-run driver on August 29 while attempting to cross York Avenue near Faculty House.

Henderson's mother, Margaret Henderson, and his cousin, Gordon England, attended the ceremony in Caspary, as did many others from the university community and New York Hospital. The service included speeches by co-workers and friends, interspersed with the music of Mozart, Dvorák and Bach performed by a local string quartet. Professor Anthony Cerami, who heads the laboratory where Henderson worked during his five-year tenure at Rockefeller, led the program and commented on the distinguished research and initiatives that marked Henderson's studies of parasite biochemistry.

Richard A. Galbraith, Medical Director of the hospital, remembered Henderson as a man who lived for "good science," consumed with a "tremendous drive to pursue his research." Research Associate Andrew Slater, after reading an excerpt from poet Raymond Carver's *The Boat* in Henderson's honor, described the late scientist as "a generous and creative man." →→

In The News

- The September 1 issue of the Hamilton, Ontario *Spectator* mentioned **Vincent A. Fischetti**, Associate Professor, in an article on streptococcal toxic shock syndrome, the disease that killed Muppet creator Jim Henson in May. It quoted Fischetti as saying that the disease "progresses quickly and causes a high fever, a sudden drop in blood pressure, and an interruption of circulation that could cost a limb or life."

- The September 21 issue of *Science* includes a paper by **Fernando Nottebohm**, Director of the Center for Field Research in Ethology and Ecology, suggesting that adult bird brains have considerable potential for self-repair as neurons grow old and wither away. "But we're not sure if or how these findings apply to humans and other mammals," Nottebohm told another publication, *Science News*, which discussed his paper in its September 22 issue.

- **Dennis Stark**, Director of the Laboratory Animal Research Center, told *The Washington Post* that "ten years ago, nobody was looking into (nonanimal) toxicity testing because they thought that the mechanisms were too complex. Today we've developed a lot of those assays and found that they're good for some things and not good for others. No one test is going to give the answer for all of these compounds, and that's what's scary." The article, on animal testing, was picked up by numerous other papers, including the August 29 edition of the *Minneapolis Star Tribune*.

- Rockefeller scientists are also called on to comment about current events, as was evident when Professor **Norton D. Zinder** was quoted by *Newsday* on an aspect of the Gulf crisis. Speaking of the perils of fighting a chemical war in the desert, he said that while a Soviet chemical defense uniform "would cook you in about ten minutes," the American uniform fares only marginally better. "In our suits," he said, "you'd last for half an hour." ☒

Huffman (continued from page 1)

- Equal Employment Opportunity/Affirmative Action programs,
- Major restructuring of job descriptions,
- Improved performance appraisals, and
- A new salary structure for the entire university.

"I am very excited about the opportunity to put the new administration's personnel program into action," Huffman said. "We will do a better job of helping labs and departments define their employment needs, and we will be far more aggressive in seeking out candidates for those positions. And when people apply here, we will be sure to reflect the importance of the work of the university as well as its spirit."



Director of Personnel Virginia Huffman

"If we do our job especially well, we can have a significant effect over time in raising the level of talent available for hiring in all areas of the community."

The charter she has set for herself was echoed by Executive Vice President Frederick M. Bohen: "A university with Rockefeller's aspirations for excellence depends overwhelmingly on the quality of the people it is able to hire and keep. It's especially fitting then that one of our first key administrative decisions is the appointment of a new director of Personnel. Ginny is well-known in all sectors of the Rockefeller community. I have great confidence she will be able to lift this office and successfully address the difficult personnel challenges all employers in the city face."

Some new initiatives have already been undertaken by the office. The weekly publication *Job Postings* has been circulated since the beginning of September as a vehicle for encouraging the personal advancement of employees within the university. It is part of a larger plan to help relieve the scientific staff of some of their administrative burdens so they can devote themselves to research endeavors with fewer distractions.

Huffman holds a B.A. in Liberal Arts and an M.A. in Education from New York University. ☒

New recreational therapist seeks volunteers

Maryanne Holt played gently with 13-month-old Brittany Pollock in a playroom of the Rockefeller hospital. The toddler cooed and giggled, then tried to hug her likeness in a mirror.

"I see my job at the Rockefeller as a culmination of the work I've done in recent years using the arts and psychiatry to help people with special needs," Holt said, interrupting an interview to chase the active child. "I'm looking forward to developing a good core group of volunteers who can help expand the department and meet the needs of individual patients."

Holt's job is to provide creative, personal attention to hospital patients who may spend months at the facility undergoing important but often tedious therapy. And therein lies a problem: Holt—like her predecessor Stephanie Rietze—relies on volunteers to help care for and entertain patients of various ages, backgrounds and interests.

An informational meeting will be held on Friday, October 12 at 3:00 p.m. in H128 for those interested in volunteering

their time and talents to work with patients. During the meeting, Dr. Richard Galbraith, Medical Director of the hospital, Lanie Fleischer, Social Worker, and Ms. Holt will describe the program in detail and answer questions. Those who would like to volunteer but who cannot attend the October 12 meeting can call Holt at x8474 for information.

Holt came to Rockefeller this summer after four years teaching

art in area high schools and one year with Our Lady of Mercy Medical Center in the Bronx. She holds a B.A. in Fine Arts from the College of Mount Saint Vincent in Riverdale and will complete an M.S. in Art Therapy from the College of New Rochelle at the end of this year. She has also been involved in arts administration at area art centers, including the Rockland Center for the Arts and the Pelham Arts Center. ☒



Shari Diamond

Some patients require more attention than others! Above, Maryanne Holt, the university's new recreational therapist, enjoys a moment with one of the hospital's younger patients, Brittany Pollock.

Honors & Awards

Professor **Gunter Blobel** of the Laboratory of Cell Biology was one of 21 scientists awarded Wellcome Visiting Professorships in the Basic Medical Sciences for the academic year 1990-91.

Rockefeller alumni **Thierry Boon** (1970)

was awarded the 1990 Francqui Prize, the most prestigious Belgian award. He is presently director of the Brussels branch of the Ludwig Institute for Cancer Research. Another Rockefeller graduate, Pierre van Moerbeke (1973), received the prize a few years ago.

Professor Emeritus **Neal E. Miller** presented the first Neal E. Miller New Investigator Award for Early Career Research Contributions during meetings

of the Academy of Behavioral Medicine Research in Florida in June. Later that month, he was named a Distinguished Scholar at the First International Congress of Behavioral Medicine in Uppsala, Sweden.

Rollin C. Richmond, a 1971 graduate, was appointed dean of the College of Arts and Sciences at the University of South Florida in July.

Season tickets still available

University concert series begins

The Rockefeller's 1990-91 concert season began Wednesday night with a performance featuring the artist John Aler, a tenor possessing, according to *Opera International*, "elegance and refinement . . . a strong beautiful timbre and excellent diction."

Talent of this distinction is common to concert seasons at the university, and this year is no exception. The Virtuosi Quintet, which won Musical America's "Young Artists of 1986" award, will appear on campus as part of the series on Wednesday night. Other important artists will perform throughout the academic year.

Seating is still available for the season's events. The cost for the full series is \$175.00; a half-series ticket (Series A or B) is \$87.50. For information, contact x8437. ➡➡

Electronics course offered

Dr. Larry Eisenberg of the Electronics Shop will offer a course in analog and digital circuits October 3 through April 17 in Caspary 1B. The course will consist of weekly lectures supplemented by a series of laboratory experiments. Register for the course by calling Anne Conners at x7899 Monday-Friday 9:00 to 1:00 or Eisenberg at x7896 on Wednesdays 11:00 to 3:30. ➡➡

Equipment display gets a facelift



Robert Brown

During August, Kate Cameron, Manager of Furnishings and Interiors, and Professor Emeritus Merrill Chase refurbished the Caspary Scientific Exhibit Area below Caspary Auditorium in preparation for installation activities. Dr. Chase helped set up the exhibit of scientific equipment in 1976 to celebrate the 75th anniversary of the founding of the university.

Lunchtime Films enter new season

A new season began for the Lunchtime Film Series on Thursday with *Plagues*, a film that looks at disease outbreaks in history. This year the monthly screenings will be held in Caspary Auditorium, and those attending are invited to bring a bag lunch. Yesterday's showing was introduced by Dr. Stephen Morse of the Laboratory Animal Research Center, who has been working in the area of "emerging viruses" for the last few years. ➡➡

Births

Viswanatham Katta and **Subhodaya Aduru**, both Research Associates in the Laboratory of Mass Spectrometry and Gaseous Ion Chemistry, had a baby girl, **Samata**, on April 29. Samata weighed 6 lb. 12 oz. when she was born in Beth Israel Hospital.

Nilabh, Research Associate in the Laboratory of Cell Biology, and **Tanuja Chaudhary**, Assistant for Research in the Laboratory of Mass Spectrometry and Gaseous Ion Chemistry, had a baby boy, **Rohan**. Rohan weighed 7 lb. 15 oz. when he was born September 18 in New York Hospital.



News&Notes is published on Fridays throughout the academic year by the Public Affairs Office of Rockefeller University. Suggestions for articles are welcome and may be sent to Box 68, or call 570-8967. Articles may also be submitted via electronic mail to *newsnotes*. The deadline for each Friday's issue is the preceding Monday at 5:00 p.m. The Rockefeller University is an equal opportunity employer and has an affirmative action program to increase the employment of women and members of protected groups at all job levels. Editor: Robert Brown. Designer: Patricia Sadiq.