

2-1975

NEWS AND NOTES 1975, VOL.6, NO.5

The Rockefeller University

Follow this and additional works at: http://digitalcommons.rockefeller.edu/news_and_notes_1975

Recommended Citation

The Rockefeller University, "NEWS AND NOTES 1975, VOL.6, NO.5" (1975). *News and Notes 1975*. Book 6.
http://digitalcommons.rockefeller.edu/news_and_notes_1975/6

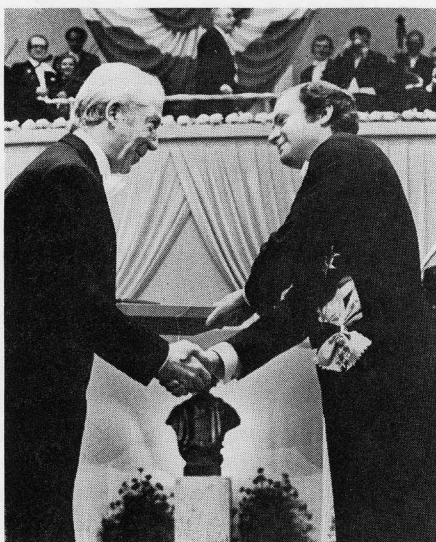
This Book is brought to you for free and open access by the The Rockefeller University News and Notes at Digital Commons @ RU. It has been accepted for inclusion in News and Notes 1975 by an authorized administrator of Digital Commons @ RU. For more information, please contact mcsweej@mail.rockefeller.edu.

THE ROCKEFELLER UNIVERSITY

FEBRUARY 1975
VOLUME 6 NUMBER 5

news and notes

NOBEL DAY



Professor Christian de Duve left, accepts the Nobel Prize in Physiology or Medicine for 1974 from King Carl of Sweden at ceremonies in Stockholm on December 10. Dr. de Duve shared the prize with Albert Claude and George E. Palade (see photo below).

Rockefeller Scientists at AAAS Meeting

The 141st Annual Meeting of the American Association for the Advancement of Science, the largest regular gathering of scientists in the world, was held this year in New York, January 26-31. Rockefeller scientists participated as speakers and as members of the New York City Advisory Committee. Professor Vincent P. Dole, Biology of Addictive Diseases, spoke on Drug Abuse as an Urban Health Problem. Professor Mark Kac, Mathematics, delivered a talk on Mathematics for the Naked Eye. Professor Neal E. Miller, Physiological Psychology, arranged a section on Brain Function and Physical Well-Being and spoke on the Effects of Learning on Emotions and Health.

President Seitz, President Emeritus Detlev W. Bronk, Professor Gerald M. Edelman, Biochemistry, and Adjunct Professor Emmanuel Piore served as members of the New York City Ad-

visory Committee. President Seitz also participated on the program committee. Public Information Associate Eugene H. Kone served on the public information subcommittee and arranged a session on How Public Understanding of Science Can Enhance the Quality of Life. Participating in that session was Rockefeller alumnus Glenn O. Paulson, currently assistant commissioner of science of the New Jersey Department of Environmental Protection. Dr. Paulson gave a talk on Environment, Energy, and the Science Writer.

More on Energy

Following intensive measures to hold the line on energy consumption at the University, including those which were described in *news and notes* last month, the Energy Conservation Committee is preparing a brief progress report which will appear in the March issue. In the meantime, the committee again reminds us that "it is only by a unified and continuing effort on the part of every member of the University community that we can succeed in trimming wasteful or inefficient use of our available energy."

NOBEL ART EXHIBIT

As a part of the 1974 Nobel Prize celebration, the art collection of the 1961 Nobel Laureate Georg von Békésy, which he had bequeathed to the Nobel Foundation, was placed on exhibition at the Museum of Far Eastern Antiquities in Stockholm. Professor Floyd Ratliff, Biophysics, a longtime friend of von Békésy, wrote the introduction to the catalog, and he and Mrs. Ratliff attended the opening of the exhibition by the King of Sweden, and the other Nobel festivities, as guests of the Nobel Foundation.



Front row, left to right: Laureates Antony Hewish (physics), Paul J. Flory (chemistry), Albert Claude, Christian de Duve, and George E. Palade (physiology or medicine), Eyvind Johnson and Harry Martinson (literature), Alexander Solzhenitsyn (literature, 1970), Gunnar Myrdal and Friedrich von Hayek (Alfred Nobel Memorial Prize in Economic Science).

There's More to It Than Checks and Balances

*Annual Report - Rockefeller
Institute for year ending
30th June 1902 -*

Receipts -
J. D. Rockefeller 18,000.

Disbursements
Appropriations 16,064.21
Attending Meetings 650.-
Stationery Postage 69.53
Reprints 53.30 16,834.04

Balance on hand 1,162.96

for items of Appropriations see over

Reproduced above is a portion of the first annual report of The Rockefeller Institute for Medical Research, a graphic reminder of how this institution has grown since 1902. Last year, the University's payroll numbered 1,501 people—on campus and in the field—and the total operating budget was \$30 million.

A large staff of specialists and helpers is required to administer the University's complex financial affairs—in Accounting Services, Computer Services, and Budgeting and Special Services—under the direction of Controller David J. Lyons. Accounting Service's Manager Margery Pedersen came to the University in 1928 as a clerk in what was then called the bursar's office. A handful of workers managed the Institute's accounts, posting all transactions by hand. Last year, Miss Pedersen and her staff, among many other duties, processed 27,173 purchase orders and 19,608 requisitions and drew 20,105 checks, with the help of numerous sophisticated machines. The office's files are so voluminous that, in order to prevent the paper from taking over, they must be transferred to microfilm. Working with Miss Peder-

sen in the service's spacious offices on the second floor of Founder's are Senior Accountant Nicholas F. Danisi, who has been with the University for 20 years, and Accountants Vittorio Cardinale, Leslie McKenzie, and Has-mukh Patel; the accounts payable staff headed by 22-year Rockefeller veteran Vera Schuerger; Mary Sotiropoulos's payroll staff; Ethel Macklin, who takes care of accounts receivable; and Mary Saypack, cashier. Despite her growing responsibility as she moved from clerk to bookkeeper to accountant to chief accountant to manager, Miss Pedersen never failed to appear for the bridge game that was a campus lunch-hour institution for two decades. Now, after 46 years of "a very good time," she is retiring on March 31.

In the files that Miss Pedersen will leave behind are documents relating to an event that dramatically changed the operation of University finances. In 1954, the University received two grants from an outside foundation, breaking the institution's historic practice of funding exclusively from endowment income. The grants totaled \$24,890. Today, the University holds 250 grants—from both governmental and private sources—worth about \$11 million, a sum which nearly equals the yearly endowment and gift income. "With these external funds," says Mr. Lyons, "came a great growth in accountability and the need for adequate documenting of expenditures." Dozens of reports must be filed each month. Mr. Lyons, a soft-spoken, easy-humored Midwesterner, characterizes himself as the man who tries to protect the researcher in the lab "as much as it's possible" from the endless red tape of the "cold outside world"—to place himself at "that terrible interface with the auditors."

Over the years, University book-keeping has progressed of necessity

from a hand operation to keypunch machines and computers. The University's UNIVAC system handles not only the University's accounting procedures but also processes patient records for the Hospital's Center for the Prevention of Premature Arteriosclerosis, the Rockefeller University Press subscription rolls, and billing for the nearby Animal Medical Center. The system is in the charge of Toby Fishman, computer analyst.

The implacable fact of University life is budgets. The budget for each University "account"—227 at present count—is prepared annually to conform to the University's fiscal year, July 1 through June 30. Ultimate approval rests with the board of trustees, but long before it reaches the members' desks it is reviewed by the University's president, vice presidents, treasurer, and controller. Mr. Lyons is responsible for accumulating and analyzing budget requests, summarizing revenue estimates, and drafting preliminary budgets for discussion with the University's officers. Aiding him is Janet Cocchiarella, a recently graduated math major from Hunter College, whose desk is covered with a mountain of control sheets and ledgers. She records every change of salary and appointment and incorporates all projections, recommendations, appropriation cuts and increases, and expense changes. In addition, she prepares monthly breakdowns of the University's overall expenditures including plant operation costs, salary and benefit expenditures, and funds receivable. Budget requests are usually ready by late November. They are reviewed by President Seitz in early December, and are submitted for approval to the budget committee of the board of trustees in late December or early January. As this story goes to press, the board is officially adopting the budgets that will guide the working lives of all of us for the 12 months beginning next July.

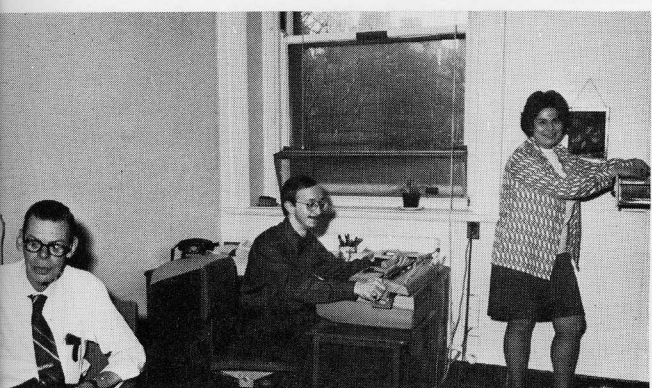
Accounts payable, left to right: Louise Ferraro, Margherita Crociata, Evelyn Cordell, Vera Schuerger, and Margaret Lozier (standing).

Left to right: Cashier Mary Saypack, Typist-clerk Cynthia Harrison, and Ethel Macklin of accounts receivable.





Computer services, left to right: Toby Fishman, Bindu Patel, and Emma Sebbane.



Payroll, left to right: William Farron, Raymond Heffler, and Mary Sotiropoulos.



ABOVE: Left to right: Controller David J. Lyons, Budget Analyst Janet Cocchiarella, and Administrative Secretary Alice Wells.

BELOW: Left to right: Accountant Leslie McKenzie, Manager Margery Pedersen, Accountants Vittorio Cardinale and Hasmukh Patel, and Senior Accountant Nicholas F. Danisi.



University Lectures, Research Colloquia

Rockefeller University Lectures scheduled for the coming weeks are:

Professor Hiroshi Asanuma, Neurophysiology, Cerebral Mechanisms Controlling Movement (February 14); Seymour Kety, director, Psychiatric Research Laboratories, Harvard Medical School, Recent Genetic and Biochemical Approaches to Schizophrenia (March 6); Sheldon J. Segal, director, Bio-Medical Division, The Population Council, Evaluation of Population Programs Worldwide (March 7); Professor Abraham Pais, Theoretical Physics, The Weak Forces: How It Began (April 4).

Research Colloquia will be presented by:

Thomas M. Buchanan, head, Immunology Research Laboratory, U.S. Public Health Hospital, Seattle, and assistant professor of medicine, University of Washington Medical School, title to be announced (February 21); Research Associate Gerd E. Griener, Biochemistry, Control and Differentiation of Plasma Protein Synthesis in Cultured Liver Cells (February 28); Professor Brian H. Poole, Biochemical Cytology, Cellular Protein Turnover (March 14); Professor Shigeru Sassa, Metabolism-Pharmacology, The Development of Microassays of the Heme Biosynthetic Pathway and Their Application to the Study of Heme Biosynthesis in Friend Leukemia Cells (March 21).

University Lectures and Research Colloquia are held at 3:30 P.M. in Caspary Auditorium and are open to all members of the University community.

IN PRINT

The December issue of *Psychology Today* contains an article, *Neurotransmitters and Helplessness: A Chemical Bridge to Depression?*, by Professors **Jay M. Weiss** and **Larissa A. Pohorecky** and Postdoctoral Fellow **Howard I. Glazer**, Physiological Psychology. In it they discuss the results of recent experiments in which temporary depletion of the amount of the chemical norepinephrine in the brain of experimental animals, caused by environmental stress, rendered the animals unable to cope. Their effectiveness returned, however, with the return of normal levels of norepinephrine. These experiments appear to modify, at least in some cases, the concept of "learned helplessness," which has been advanced by some other investigators.

PERSONAL

Born, December 31, to Professor **Sarah F. Leibowitz**, Physiological Psychology, and her husband, Martin, a vice president of Salomon Brothers, investment brokers, a daughter, Karen Louise, their third child.

DEATH

John C. Eisenstein, 21, a graduate fellow at the University since last July, from a cerebral hemorrhage, on December 21 in Washington, D.C. Eisenstein held an A.B. degree from Harvard College.

School Benefit

Thursday, February 27 will be An Evening of Pleasures and Diversions—with dancers, singers, and musicians—on the 17th Floor of the Tower, for the benefit of the Children's School. Among those performing will be members of the Murray Louis-Alwin Nikolaïs Dance Theater Laboratory, including Kathryn Buchanan, a Children's School parent. Senior Watch Engineer Louis Perez will play Spanish guitar. A selection of English madrigals and excerpts from the *Missa Luba*, an African mass, will be offered by the University's new choral group, organized by Graduate Fellow Rocky Tuan, whose singers include Biomedical Fellow Scott Brodie, Graduate Fellows Elizabeth Dickson, Alice Gottlieb, Beverly Greenspan, Ivan Lieberburg, and Avi Snyder, Assistant for Research Diane Hooke, Secretary Denise Kaiser, and Rosalie Koenig, wife of Biomedical Fellow Ronald Koenig.

The performance begins at 8 P.M. Tickets, at \$2.50, will be on sale on campus this month or may be obtained by calling the Children's School, extension 1591. Wine and cheese will be available for a small additional charge.

A NOTE OF THANKS

Hessie Haynesworth, head chambermaid in the Graduate Students Residence, has asked *news and notes* to convey her "deepest appreciation to friends in the University who were so generous to me and my family after our apartment was destroyed by fire on December 20. We now know that there are many, many people named Santa Claus." The University Housing Office has secured an apartment for the Haynesworth family in the City Block houses on 65th Street.



William Duthie, left, with Paul Penndorf, Superintendent of Buildings and Grounds; Mrs. Duthie, far right.

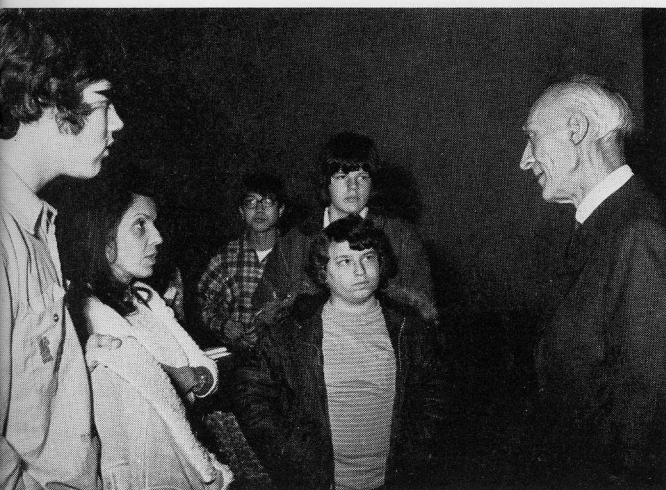
William Duthie Retires

A host of friends and fellow workers feted William D. Duthie at a party in his honor in the Tower on January 10. Mr. Duthie retired from his post as foreman of the Machine Shop on December 31. He had served as shop foreman since 1949, but his career at Rockefeller began in 1928 when he worked as a temporary summer helper at the Institute's former Princeton station. In 1930 he was made a helper in the Power House, a skilled helper in 1938, technician in 1940, acting chief engineer in 1941, and chief engineer in 1942. He earned his electrical engineering certificate from the Rutgers University extension at New Brunswick in 1934.

KUNKEL RECEIVES AWARD

Professor Henry G. Kunkel received the annual T. Duckett Jones Award of the Helen Hay Whitney Foundation for his contributions to clinical immunology. The presentation was made at the foundation's annual meeting on December 10.

During a break between sessions, Professor Armin C. Braun discusses the biology of cancer with high school students at the 1974 Alfred E. Mirsky Christmas Lectures on Science, held in Caspary Auditorium on December 30 and 31.



PROMOTIONS

Frank M. Griffin, Cellular Physiology and Immunology, to assistant professor, effective, January 20.

Ben Ami Sela, Biochemistry, to research associate, effective January 15.

Scientists' Energy Plan

Thirty-two of the country's leading scientists, among them President Seitz, have issued a statement calling for a national energy policy which "shall have to make much greater use of solid fuels"—meaning coal and uranium—with the emphasis on nuclear power. The statement was presented on January 16 at the National Press Club in Washington by the group's organizer and chairman, Nobel physicist Hans A. Bethe of Cornell University, in company with President Seitz and physicist Richard Wilson of Harvard University, who spoke for the larger group which includes 11 Nobel prize winners.

Claiming that the current energy crisis has put the nation in "the most serious situation since World War II," the scientists "deplore the fact that the public is given unrealistic assurances that there are easy solutions." They assert that even with intensive development, supplies of oil and natural gas cannot meet the country's current and future needs and that conservation can be only a partial solution. Listing the vast resources of coal and uranium, they express confidence that management of nuclear energy can be made safe, concluding that "we can see no reasonable alternative to an increased use of nuclear power to satisfy our energy needs."

SHOW HILLCREST PHOTOS

This month, the Library is exhibiting photographs of Hillcrest, the former home of the late Mrs. John D. Rockefeller, Jr., in Pocantico Hills, and of the work being done there to create the Rockefeller Archive Center, scheduled to open in June. The center, which will be governed by the board of trustees of the University through a governing council representing the original depositors, will hold the archives of The Rockefeller Foundation, the Rockefeller Family & Associates, the Rockefeller Brothers Fund, and the University. It will be managed by Dr. Joseph Ernst, archivist of the Rockefeller Family & Associates, and Dr. William Hess, archivist of The Rockefeller Foundation.

Standing Committee Reviews Proxy Study

At its January 23 meeting, the Standing Committee on University Affairs discussed food services, energy conservation, University-wide financial trends, housing, and the continuance of a two-year experiment in making recommendations to the Finance Committee of the Board of Trustees for voting on selected shareholder resolutions concerning corporations in which the University holds stock.

In shareholder recommendations, the SCUA generally has focused on proxies raising moral or ethical issues. Before drafting recommendations, the SCUA has sought to obtain opinions from the campus community and has gathered information from various sources on the investments involved. The Finance Committee, which is legally responsible for administering the University's investment portfolio, has reviewed the SCUA recommendations before taking action on the 19 proxy solicitations chosen for the experiment.

Among the issues involved were corporate disclosure of data on overseas operations and on equal employment practices, corporate political contributions, and the role of American corporations in several African countries, including South Africa. Information on the SCUA's recommendations, actions taken by the Finance Committee, and the responses from the corporations involved is now available and can be obtained by members of the campus community from Vice President Rodney W. Nichols.

The objective of the 10-member SCUA is to foster broader communications on campus. It includes two representatives each from the trustees, tenured faculty, nontenured faculty, graduate fellows, and administration. Trustee Walter Rothschild serves as chairman and reports regularly to the board on the committee's activities and suggestions.

APPOINTMENTS

Allan L. Abati, Medical Biochemistry, to research associate, effective January 1.

news and notes is published monthly from October to July. This is Volume 6, Number 5. Contributions are welcome and may be sent to *news and notes*, Box 194 or phone ext. 1166. Photographs: page 1, Swedish Information Service, and pages 2, 3, and 4 Henrik Boudakian, Graphic Services. © 1975 The Rockefeller University Press, New York 10021. Printed in the United States of America.